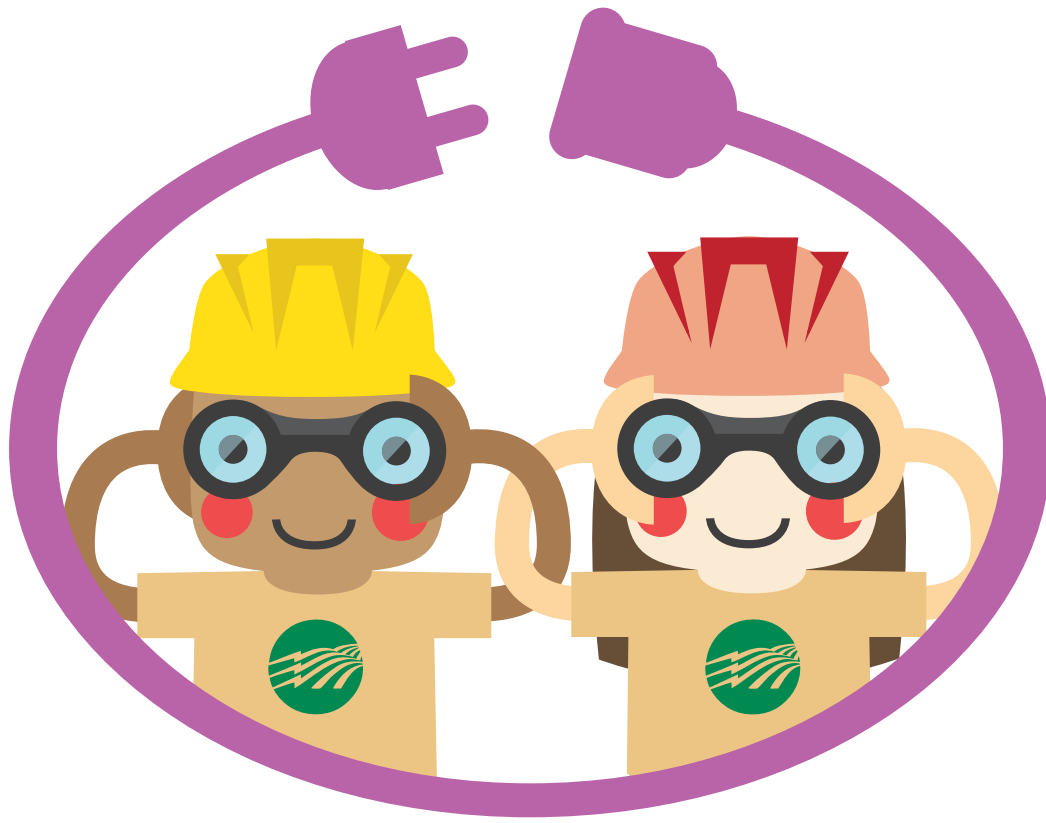


SUMMER ISSUE



# Energy Explorers

*Southern Rivers Energy*<sup>®</sup>

A Touchstone Energy<sup>®</sup> Cooperative



# ENERGY SAVINGS PLAN FOR THE FAMILY

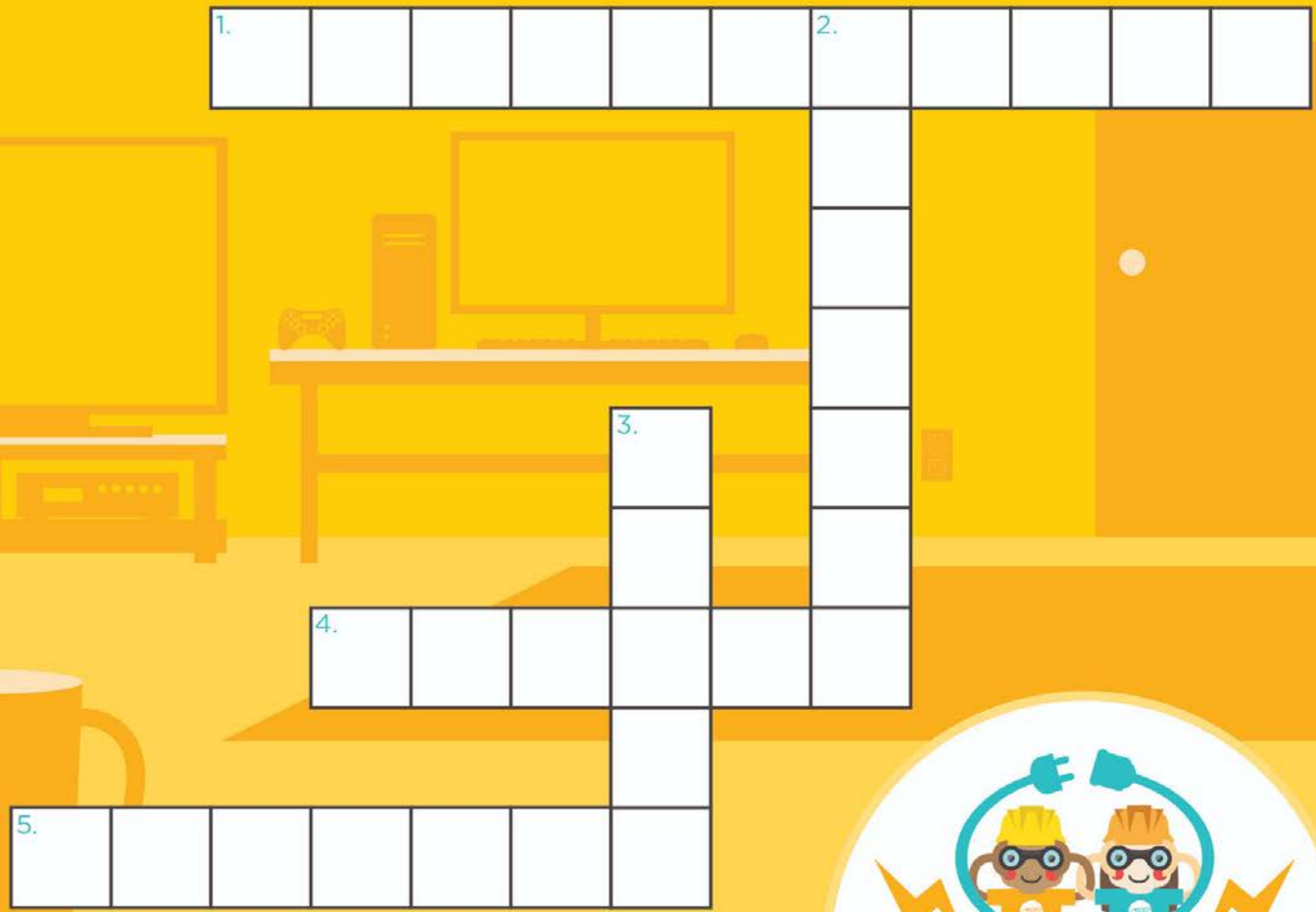


There are several easy ways you and your family can save energy at home! Print this page, assign each energy-saving task, then place it on your fridge so your family can work together to save energy - and money.

WAY TO SAVE ENERGY	ASSIGNED TO:
Turn off lights in empty rooms.	
Replace any incandescent and/or CFL bulbs with LED bulbs.	
Turn off electronics that aren't in use (TVs, gaming consoles, etc.).	
Unplug phone chargers that aren't in use.	
Turn off ceiling fans in empty rooms.	
Adjust the thermostat when you leave the house. (Set it higher in the summer and lower in the winter.)	
Once a week, make a meal that doesn't require cooking in the kitchen. (Make PB&Js or cook outside.)	
Make sure all doors and windows are closed when the air conditioner or heater is running.	



# ELECTRICAL SAFETY CROSSWORD PUZZLE



## May is Electrical Safety Month!

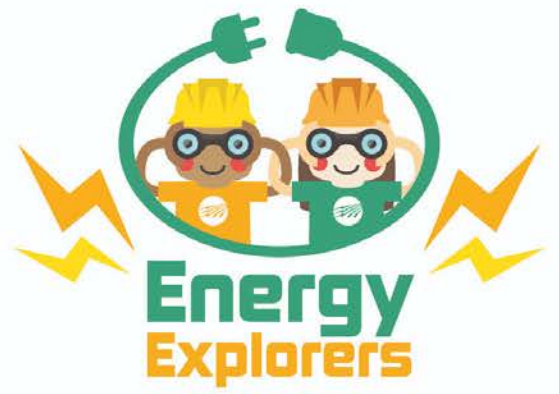
Read the safety tips below to complete the crossword puzzle.

- 1. ACROSS:** Keep all liquids away from \_\_\_\_\_, like TVs, computers and gaming consoles.
- 2. DOWN:** Never overload electrical \_\_\_\_\_. This creates a greater risk of fire.
- 3. DOWN:** Never use electrical \_\_\_\_\_ that feel warm to the touch or are damaged in any way.
- 4. ACROSS:** Smoke \_\_\_\_\_ should be installed in every bedroom, outside each sleeping area and on every level of your home.
- 5. ACROSS:** Don't run electrical cords under rugs. This creates potential fire \_\_\_\_\_.



# FAMILY PICNIC COLORING SHEET

An outdoor picnic is a great way to spend time with your family! Cooking outdoors also helps you save energy because you don't have to use appliances that heat up your home.



# ENERGY CONSERVATION TIPS FOR KIDS!



Did you know there are small things you can do to help your family conserve energy at home? Fill in the blanks below to learn how you can help. Use the word bank below if you need a hint!

- 1 Turn the \_\_\_\_\_ off while you're brushing your teeth. You can save several gallons a month just by taking this simple step.
- 2 Any time you leave a room, remember to turn off the \_\_\_\_\_. Ask your parents if they use LED lights, which save the most energy!
- 3 With the help of your parents, \_\_\_\_\_ glass, plastic, paper and aluminum items.
- 4 When the heat or air conditioning is running, always keep \_\_\_\_\_ to the outside closed.
- 5 Take short \_\_\_\_\_ instead of baths to conserve water use.

## Word Bank

Showers  
Doors  
Water  
Recycle  
Lights



AMERICA'S ELECTRIC  
COOPERATIVES



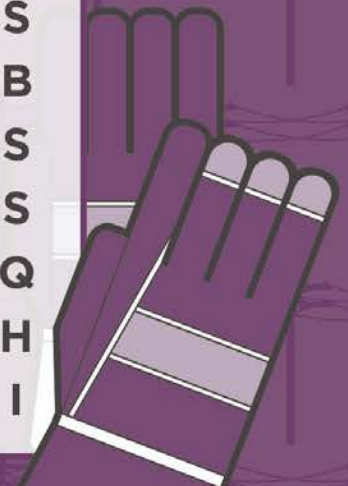
# LINEWORKER GEAR WORD SEARCH



Did you know lineworkers wear special protective gear to keep them safe while working on power lines and other electrical equipment?

Read the descriptions to learn about a lineworker's gear and find the **bolded words** in the puzzle below.

- **Safety goggles** keep debris away from lineworkers' eyes while on the job.
- **Hard hats** protect lineworkers from head injuries and falling debris.
- **Work boots** provide extra protection while lineworkers work with heavy materials that could fall near their feet.
- **Flame-resistant** clothing keeps lineworkers safe from electrical hazards.
- **Insulated gloves** protect lineworkers from electrical shock while working on power lines.
- **Equipment belts** hold several tools that lineworkers need to get the job done.



# GEARED FOR SAFETY

Electric co-op lineworkers wear special gear to help them stay safe on the job. Can you match the descriptions below to the correct safety equipment? Use the answer key to check your work!



## Energy Explorers



1. These provide extra protection while lineworkers work with heavy materials that could fall near their feet.

---

2. This material keeps lineworkers safe from electrical hazards.

---

3. This protects lineworkers from head injuries and falling debris.

---

4. These insulated protectors keep lineworkers safe from electrical shock while working on power lines.

---

5. These keep debris away from lineworkers' eyes while on the job.

---

6. This is a handy piece of safety gear that holds tools and other equipment.

---



AMERICA'S ELECTRIC COOPERATIVES

Answers: 1. Work Boots 2. Flame-Resistant Clothing 3. Hard Hat 4. Insulated Gloves 5. Safety Goggles 6. Equipment Belt





# ELECTRICAL SAFETY QUIZ

Test your electrical safety knowledge by taking the quiz below!

Use the answer key if you need help.

- 1. Smoke alarms in your home should be tested \_\_\_\_\_.**
  - A. once a week
  - B. twice a year
  - C. once a month
- 2. Overloading electrical outlets and power strips can create an electrical fire hazard.**
  - A. True
  - B. False
- 3. What's the most dangerous place to use electricity?**
  - A. Outdoors
  - B. Near other electrical equipment
  - C. Near water
- 4. It's safe to run an electrical cord under a rug or carpet as long as the cord is not damaged.**
  - A. True
  - B. False
- 5. Which is safest to play near?**
  - A. Power lines
  - B. Pad-mounted transformers
  - C. Neither A or B - both are dangerous



Answer Key: 1. C 2. A 3. C 4. B 5. C



AMERICA'S ELECTRIC  
COOPERATIVES

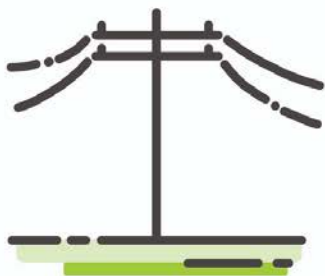


# ENERGY TERMS QUIZ

Can you match the definitions below with the correct energy terms?  
Use the word bank for clues!

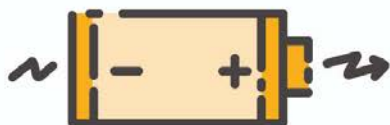


1. These energy sources, like coal, oil and natural gas, were formed from the remains of ancient plants and animals buried underground and are used to generate electricity.



2. This is the network of poles and power lines that sends electricity from where it's generated to homes and businesses all over the county.

3. These energy sources include natural energy from the sun, wind and water and are used to generate electricity.



4. This is the flow of electrically charged particles like electrons within a conductor or circuit.

5. This is the act of using less energy.



## Word Bank

CURRENT

ELECTRIC GRID

FOSSIL FUELS

RENEWABLE RESOURCES

ENERGY CONSERVATION



AMERICA'S ELECTRIC COOPERATIVES

Answer Key: 1. fossil fuels 2. electric grid 3. renewable resources 4. current 5. energy conservation

# POWER RESTORATION FILL-IN-THE-BLANK



When the power goes out, line crews work hard to restore service as quickly and safely as possible. Complete the fill-in-the-blank activity below to learn about the steps of power restoration. Use the word bank if you need help, and check your work in the answer key.

## Word Bank:

distribution  
pads

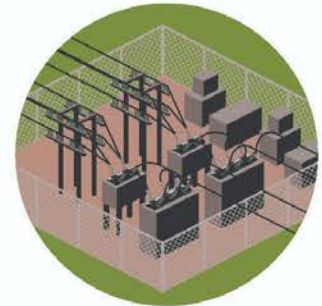
transformer  
substations

transmission



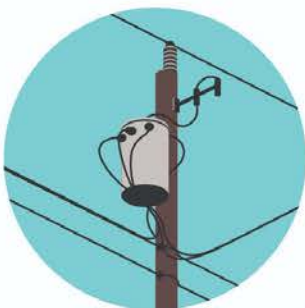
1. High-voltage \_\_\_\_\_ lines are the large towers and cables that supply power to the greatest number of consumer-members. They rarely fail, but if they do, they have to be repaired first.

2. Next, crews inspect distribution \_\_\_\_\_ for damage. They determine if the problem stems from the lines feeding into the equipment itself, or if the problem is further down the line.



3. If the problem still can't be pinpointed, \_\_\_\_\_ power lines are inspected. These are the lines you typically see on the side of the road that deliver power to communities.

4. If the power outage persists, supply lines (also known as tap lines) are inspected. These lines deliver power to transformers that are either mounted on poles or placed on \_\_\_\_\_ for underground electric service.



5. If your home remains without power, the service line between the \_\_\_\_\_ and your home may need repairs.

Answer Key: 1) transmission 2) substations 3) distribution 4) pads 5) transformer